



MME. PURDY-WEIR'S POST MAY 2024

Volume 15, Issue 9

May 2, 2024

Marshview Middle School

DATES TO REMEMBER

- **May 3rd**—No classes, NBTA Subject Council Day
- **May 7th to 9th**—Scholastic Book Fair, MMS Library
- **May 15th and 16th**—5PW Provincial Assessments in FILA reading and Math
- **May 17th**—No classes, NBTA Branch Meetings
- **May 20th**—No classes, Victoria Day
- **May 24th**—*ALICE: A Dance Tale* at MTA-Con Hall 9am

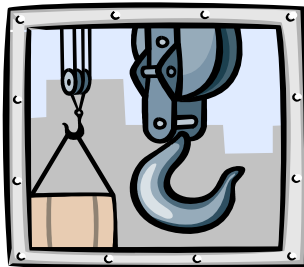


REMINDERS

- * **AGENDAS**—Please continue to check and initial your student's agenda **nightly** to ensure that all homework is being completed properly and that there is no correspondence from teachers.

OUR FOCUS THIS MONTH:

Last week we began our science unit on "*Forces and Simple Machines*". We will spend approximately 4 weeks on this interesting topic, examining the types of forces



that exist in the world around us (gravitational, magnetic, electrical etc.); simple machines and how they work; and

elements of friction. We will finish with a final project where students will work in groups to create their own Rube Goldberg machine! As usual, all components of our French Immersion Language Arts (reading, writing and speaking) will be integrated into Science. Students will be writing a provincial assessment for reading comprehension on May 15th.



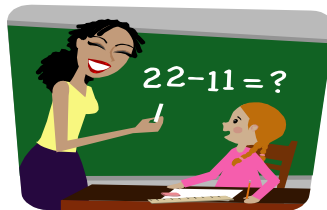
ELA NEWS:



This month the class will be introduced to *research projects* as part of our ELA curriculum. The class will begin by studying a common topic. I will model how to conduct research for a project using the iPads and our school library's resources. We will learn how to distinguish what is important and factual information, how to cite references in a bibliography, choose photos, etc. as they pertain to our chosen subject. Following completion of this group project, students will choose and research a topic of their choice—THE PASSION PROJECT.



MATHEMATICS NEWS:



This month we will finish our unit on division (3 digit by 1 digit) and move onto studying fractions.

Students will be required to demonstrate an understanding of fractions by using concrete and pictorial representations to create sets of equivalent fractions and to compare fractions with like, and unlike, denominators. I will then introduce decimals and students will relate fractions to

decimals and decimals to fractions (to thousandths). On May 16th, all Grade 5 students will be completing a Math Provincial Assessment. We have begun review for this assessment in class, in the form of a *Problem of the Day*.